



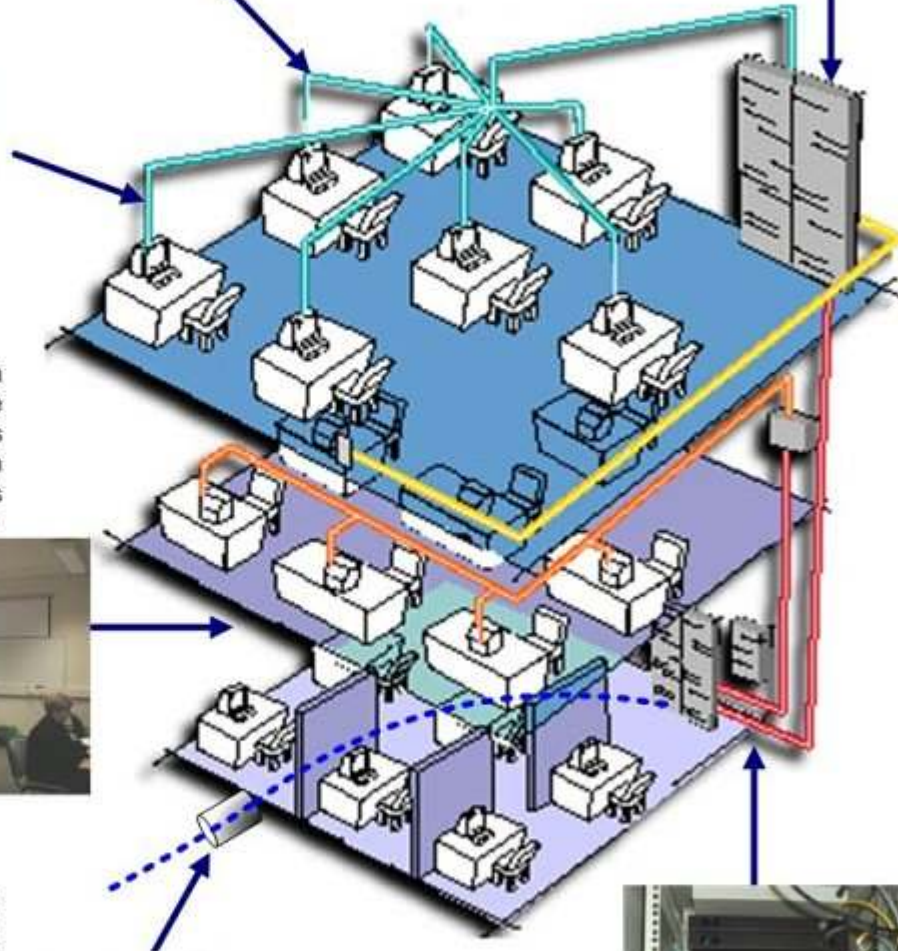
Each PC is connected via a UTP CAT5 copper cable back to the Communications Cabinet located on each floor.

Communications Cabinets are connected together using a UTP CAT6 copper cable backbone, these cables are capable of transmitting up to 100 times faster than normal CAT5 UTP copper cables Which connect your PC.



A 4-Way RJ45 Data Outlet for connecting Personal Computers.

This picture shows a typical open plan office with a Communications Cabinet feeding each PC by from a 100 Mbps CAT5 RJ45 Data Outlet.



Fibre-Optics are fed from building to building through pipes called ducts, these are mostly located underground.



Fibre-Optics are fed into the main distribution Communications Cabinet, normally located on the ground floor, this cabinet then feeds all the other cabinets in the building up to 90 meters away using CAT6 copper cable.



مخطط عام لاحدى انواع الشبكات و كيفية توصيل اكثر من شبكة مع بعضها